



INSTRUCTION BULLETIN

No. 340755
Machine: T7/SSR
Published: 01-2007
Rev. 00

NOTE: DO NOT DISCARD the Parts List from the Instruction Bulletin. Place the Parts List in the appropriate place in the machine manual for future reference. Retaining the Parts List will make it easier to reorder individual parts and will save the cost of ordering an entire kit.

NOTE: Numbers in parenthesis () are reference numbers for parts listed in Bill of Materials.

Installation instructions for **kit number 9000142**

SYNOPSIS:

This kit contains the parts needed to install the 800mm disk head assembly on T7/SSR machines. Please follow step-by-step instructions.

SPECIAL TOOLS / CONSIDERATIONS: NONE

(Estimated time to complete: 1 hour)

PREPARATION:

1. Empty the solution and recovery tanks. Refer to the Operators Manual for instructions.
2. Park the machine on a clean level surface and if necessary raise the scrub head. Turn off the machine.
3. Remove the brushes from the machine.
4. Turn on the machine and lower the scrub head and squeegees.
5. Turn off the machine and remove the key.

FOR SAFETY: Before leaving or servicing machine, stop on level surface, turn off the machine, and remove the key.

6. Disconnect the battery cables from the batteries.



WARNING: Always disconnect battery cables from machine before working on electrical components.

7. Jack or lift the front end of the machine between 6" and 12" from the floor, slide the jack stands underneath the machine, and lower the machine onto the jack stands. Refer to the Operators Manual for instructions.

FOR SAFETY: When servicing machine, block machine tires before jacking up machine. Use a hoist or jack capable of supporting the weight of the machine. Jack machine at designated locations only. Support machine with jack stands.

8. Disconnect the cables from both scrub head drive motors and the wires and hose from the water solenoid valve. Refer to Fig. 1.

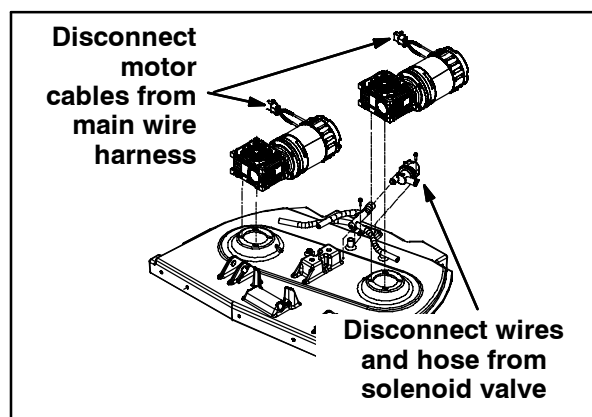


FIG. 1

9. Remove the hardware (A) holding the scrub head to the machine and slide the scrub head from under the machine. Set the hardware aside. Refer to Fig. 2.
10. Remove the lift arms (B) from the scrub head. Set the lift arms and hardware (C) aside. Refer to Fig. 2.

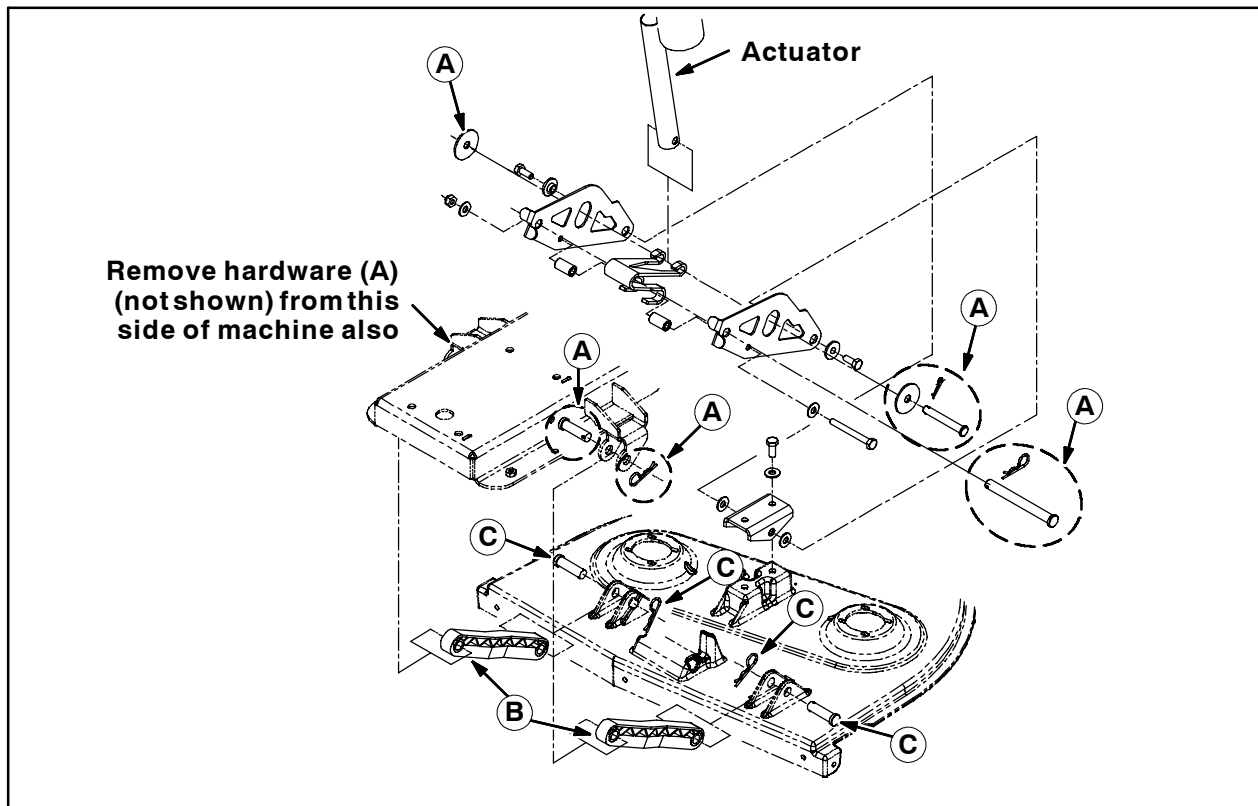


FIG. 2

11. Remove the center arm plates (D) and the scrub head lift spring (E) from the scrub head. Set center arm plates, scrub head lift spring, and all hardware (F) aside. Refer to Fig. 3.

12. Remove the lift bracket (G) from the scrub head. Set the lift bracket and hardware (H) aside. Refer to Fig. 3.

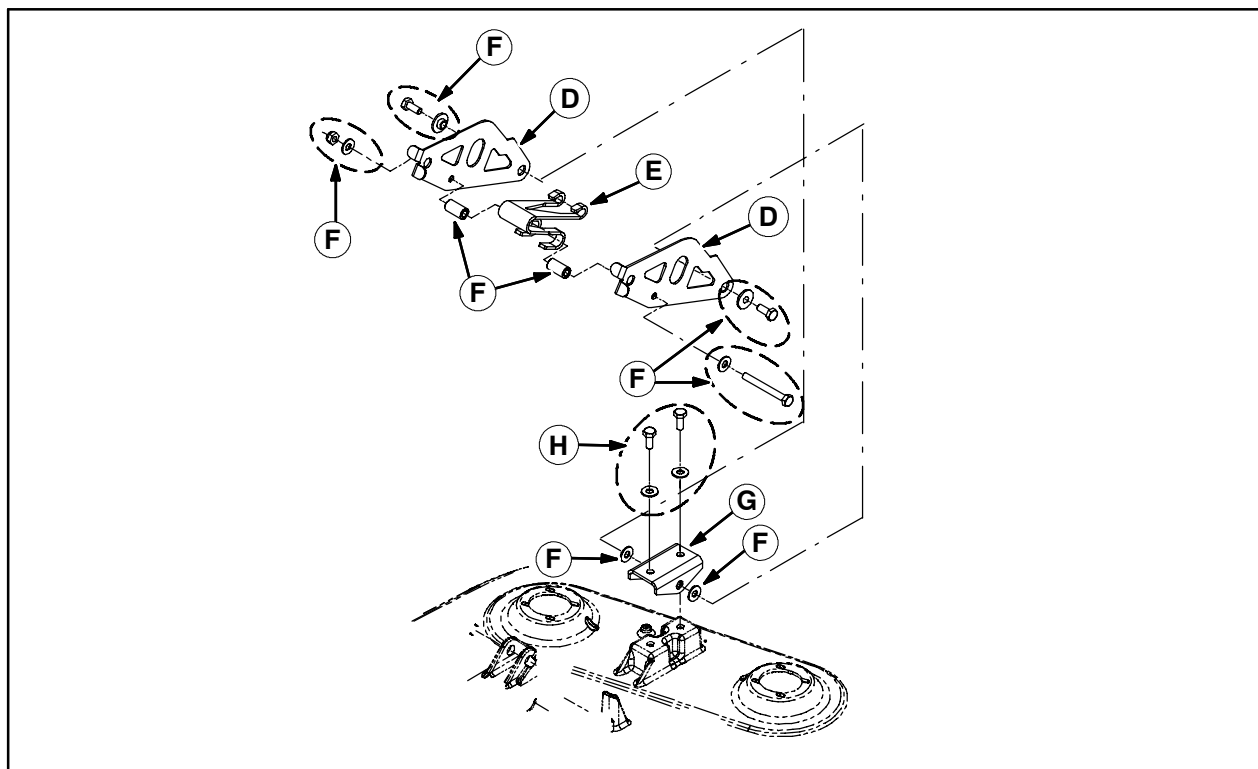


FIG. 3

INSTALLATION:

1. Use the saved hardware (H) to install the lift bracket (G) onto the new scrub head (1). Refer to Fig. 3.
2. Use the saved hardware (C) to install the lift arms (B) onto the new scrub head (1). Refer to Fig. 2.
3. Use the saved hardware (F) to install the center arm plates (D) and scrub head lift spring (E) onto the scrub head (1). Refer to Fig. 3.
4. Position the scrub head (1) under the machine and use the saved hardware (A) to install the scrub head onto the machine. Refer to Fig. 2.
5. Connect all hoses, wires, and cables disconnected from the old scrub head to the new scrub head (1). Refer to Fig. 1.
6. Install the brushes onto the scrub head (1).
7. Remove the jack stands from under the machine and lower the machine to the floor.
8. Reconnect the battery cables to the batteries.
9. Start and test the machine.

Bill of Materials for Head Kit, Disk, 800MM, CI [T7/SSR]-9000142

NOTE: BOM is included for reference only. The disk head kit is already assembled and is ready to be installed onto the machine.

	Ref.	Tennant- Part No.	Description	Qty.
▽		9000142	Head Kit, Disk, 800MM, CI [T7/SSR]	1
▲	1	1012630	Head, Scb, 800mm	1
▲	2	1017553	Cap, Motor	2
▲	3	363503	Screw, Pan, M6 X 1.0 X 12, SS	8
▲▽	4	1000083	Motor, Ele, 24VDC 0.50HP 260RPM	2
▲▲		372878	Brush Kit, Motor, Ele	1
▲▲		372879	Hook, Safety	1
▲▲		372880	Cover, Brush, Ele Motor	1
▲	5	1013821	Plate, Sppt	2
▲	6	1018559	Screw, Set, M6 X 1.0 X 30, SS	8
▲	7	08712	Nut, Hex, Lock, M6 X 1.0, SS, NL	8
▲	8	1008758	Shaft, Drive, Brush	2
▲	9	1014303	Key, Sq, 06mm X 06mm, 60mm L	2
▲	10	09740	Screw, Hex, M8 X 1.25 X 20, SS	2
▲	11	1017218	Washer, Flat, 0.321b 1.00d .12, SS	2
▲	12	377367	Hub, Drive, Brush, Disk, 0.75b 6t	2
▲	13	00928	Key, Sq, 0.25 X 0.25, 1.00l	2
▲	14	15675	Screw, Hex, M8 X 1.25 X 16, SS	2
▲	15	41186	Washer, Belleville, .31	2
▲	16	01685	Washer, Flat, 0.31 SS	7
▲	17	1011376	Skirt, Spray, 800mm	1
▲	18	1012359	Retainer, Skirt, 800mm	1
▲	19	09011	Screw, Hex, M8 X 1.25 X 30, SS	1
▲	20	08713	Nut, Hex, Lock, M8 X 1.25, NI, SS	12
▲	21	1019281	Bracket, Wheel, Guide	1
▲	22	1010560	Wheel, Bumper, 80d X 25w, Non-Marking	1
▲	23	222460	Sleeve, P/, 0.49D 0.318B 0.50L 430SS	1
▲	24	140027	Washer, Flat, 0.35b 0.75d .04, SS	1
▲	25	1014776	Manifold, Soltn, 800mm	1
▲	26	1016520	Screw, Hex, M4 X 0.7 16 Fmg, SS	3

	Ref.	Tennant- Part No.	Description	Qty.
▲	27	1013599	Valve, Water, Solenoid, 24vdc, 10bm/10bm	1
▲	28	1017910	Support Wldt, Sqge, RH	1
▲	29	1017832	Retainer, Sqge, RH	1
▲	30	1015989	Pin, Hitch, .312d X 1.62l	4
▲	31	1017495	Sleeve, P/M, 0.496d 0.318b 1.375 SS	2
▲	32	1017462	Block, Guard	2
▲	33	222504	Screw, Hex, M8 X 1.25 X 55, SS	2
▲	34	86859	Assy, Sqge, Side [Linatex]	2
▲	35	1010876	Link, Sqge	2
▲	36	1017785	Link, Sqge	2
▲	37	1011344	Spring, Tors	2
▲	38	1011334	Spring, Tors	2
▲	39	1011317	Retainer, Spring	4
▲	40	1011717	Sleeve, P/M, 0.625d 0.318b 1.00 L 430SS	8
▲	41	1011719	Washer, Flat, 0.33b 1.38d .075, SS	16
▲	42	49694	Screw, Hex, M8 X 1.25 X 50, SS	4
▲	43	222505	Screw, Hex, M8 X 1.25 X 45, SS	4
▲	44	1017534	Support Wldt, Sqge, LH	1
▲	45	1017653	Retainer, Sqge, LH	1
▲	46	09010	Screw, Hex, M8 X 1.25 X 25, SS	5
▲	47	32691	Adhesive, Thread, [242Blu 50.0ml]	1

TENNANT COMPANY
P. O. Box 1452
Minneapolis, MN 55440-1452